

SIEMENS

Technical Data

Adaptive meters for single phase future proof metering

S2AS-100

S2AS-200



Voltage values

Rated voltage U_n

Nominal value 230 V

Voltage range

0.8 up to 1.15 x U_n

Current values

Basic current I_b

for parameterizing to 10 A or 20 A

Maximum current I_{max}

for parameterizing to 100 A

Measuring range

40 mA up to 100 A

Load capacity

Measurements 100 A

Power consumption

Voltage circuit burden ≤ 0.5 W / 9 VA, typ. 0.4W

VA burden of the current circuit at I_{max} ≤ 0.25 W / 0.25 VA

Measuring accuracy

Accuracy

Accuracy according to IEC 61036 Class 2

Output values

Display

liquid crystal display LCD
6mm, 6 digits [00000.0 kWh]

Test output

Type

red-LED

Meter constant R

1'000 pulses per kWh

Pulse length

Approx. 7 ms

Pulse output r53 (option)

Type

S0-interface

Standard

DIN 43864

Values

1000 pulses per kWh

Pulse length

80 ms

External influences

Temperature range

Operation

-10 °C to +45 °C

Storage

-25 °C to +70 °C

Protection class IP 51 to IEC 60529

Impulse voltage resistance 6 kV

Electromagnetic compatibility

Electrostatic discharges to IEC 61000-4-2

- Contact discharges 8 kV

Electromagnetic high frequency fields to IEC 61000-4-3

High frequency fields

- 27 MHz up to 500 MHz at least 10 V per m

- 100 kHz up to 1 GHz Typ. 30 V per m

Line transients to IEC 61000-4-4

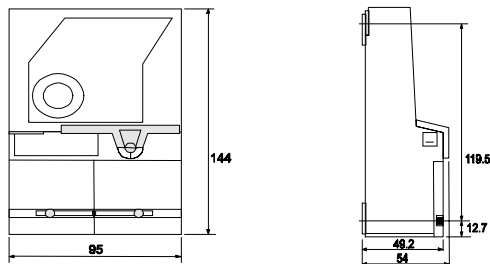
- for current and voltage circuits 2 kV

- for auxiliary circuits > 40 V 1 kV

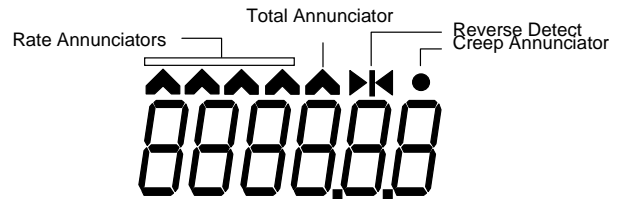
Radio interference suppression to IEC/CISPR 22 class B

Weight 450 g

Dimensions



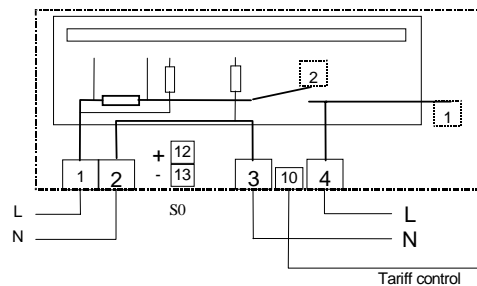
Layout of LCD display



Rate register formats

	88888
	88888.8
	8888.88
	8888.8

Connection diagrams



100A contactor "1" not available in S2AS-200
Installer switch "2" not available in S2AS-200, replaced by permanent connection.